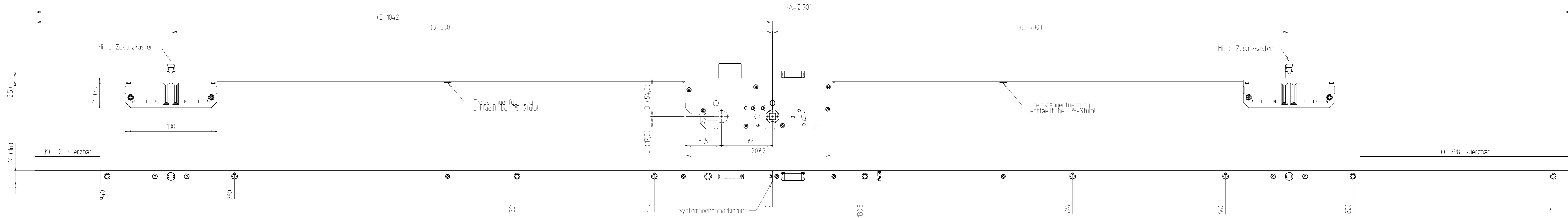


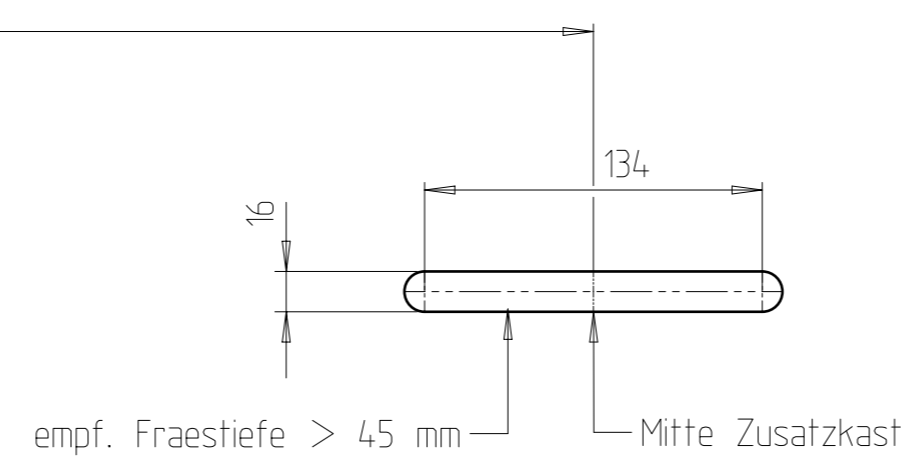
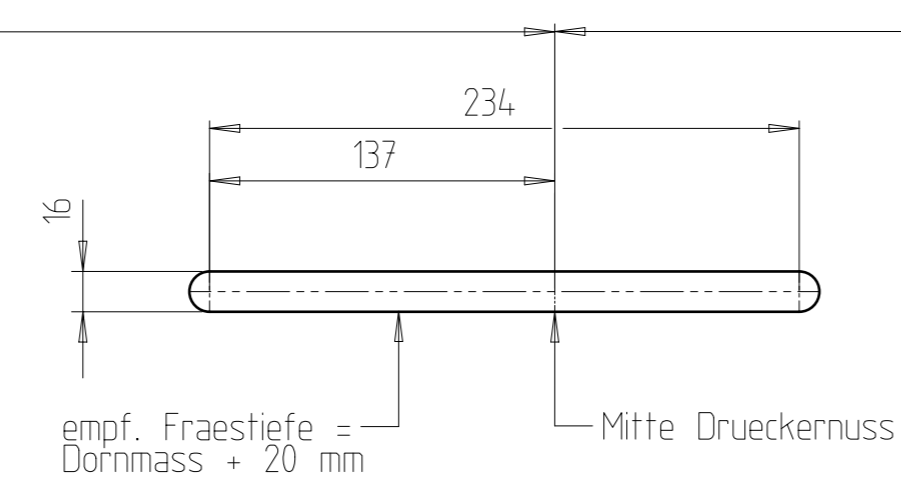
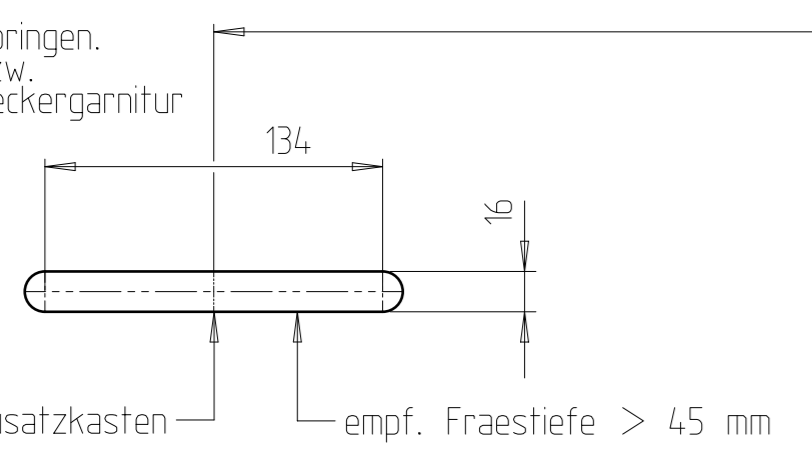
The drawing and its contents are to be kept secret from third parties, particularly competitors. The drawing and documents which go with it are not to be duplicated either in total or extract, or used in other documents without express approval. ISO and 3rd Party A reservation of rights in accordance with §2 Patent is granted.



Schlossaufnahmetaschen (M 1:3)
 Taschen mit Fraeser \varnothing 16 mm fuer Haupt- und Zusatzschlosskaesten am Tuerblatt herstellen.

Bohrungen fuer Druckergarnitur anbringen. Verwenden Sie dazu die Angaben bzw. Schablonen des Herstellers der Druckergarnitur

ACHTUNG:
 Abweichende Fraestiefen bei Sonderkonstruktionen und/oder Profilstulpen bitte anhand der Profilzeichnung ermitteln.



Stulpstaerke (t)	Zusatzkasten Mass (Y)
2 (P-Stulp)	41,5
2,5 (F-Stulp - Edelstahl)	42
3 (F-Stulp - Stahl)	42,5

Stulpstaerke (t)	Dornmass (D)				
2 (P-Stulp)					
2,5 (F-Stulp - Edelstahl)		54	64	69	79
3 (F-Stulp - Stahl)		54,5	64,5	69,5	79,5
		55	65	70	80

F-Stulp	P-Stulp	
	Schenkelhoehe	Stulpbreite (X)
16	10	22
18	10	24
20	5,5/10	24
22	10	30
24	6/10	37,5
28	5	24
30	6,3	20
	6,3	22
	6,3	24
	6,3	26
	6,3	28
	8	20
	8	22
	8	24

gezeichnet: BS2300-----F--165572-41W0001

Rev. 1	Type of Modification Aktualisiert.	AE-Nr. EK1-2326501	Drawn TsamM	Approved Wiesner	Rel. SR	Date 26.10.2023
Ident./Material-No.	Tool-No./Item-No.	Weight / g	Volume / mm ³	Tolerance - DIN EN ISO 8015		
Metric, Proj. ISO A	Material	Part Description MFS 2300				
Scale 1 : 2	Additional Notice HS5000; SENK-NR. I					
Rel. SR	Date	Doc-No. 1.2300.24496	Doc-Part-No. 000	Revision 01	Status 20	Size U
Appr. Frank Gruendahl Date 24.07.2018	Drawn Michael Wiesner Date 24.07.2018	Replacement for ... : Replaced by ... :		Test Procedure		Sheet 1/2

KFV